

STREETREACH

28 Copley Road

Doncaster

DN1 2PF

Telephone (01302) 328396 OR 813136

Fax (01302) 813136

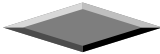
Email Streetreach@doncaster.gov.uk

www.streetreach.org.uk



ANNUAL REPORT

April 2006 – March 2007



The **STREETREACH** Project provides a confidential support service for young people and adults involved in or at risk of prostitution and sexual exploitation

Streetreach is a registered charity No 1094070

CONTENTS	PAGE
WELCOME AND INTRODUCTION	3
STAFF MEMBERS	5
STREETREACH TRUSTEES	6
LETTER FROM THE CHAIR OF TRUSTEES	7
STATEMENT OF PURPOSE & EQUAL OPPORTUNITIES STATEMENT	8
OPENING TIMES	9
OUTREACH	10
THE STREETREACH CENTRE	11
A FAST TRACK SOCIAL INCLUSION DRUG TREATMENT PROGRAMME FOR WOMEN INVOLVED IN PROSTITUTION	13
YOUNG PEOPLES PROJECT - UNDER 19S	15
CONTRIBUTIONS FROM CLIENT	20
THE FUTURE	21
STATISTICS	22
FINANCIAL REPORT	27

WELCOME AND INTRODUCTION

Dear Colleague

Welcome to the Streetreach Annual Report for 2006/2007.

Once again we are happy to report that numbers of women involved in prostitution have reduced once again.

Whilst the overall number of women met through the outreach service was 101. On closer analysis of these figures it is evident that approximately only 60 of these women are regularly soliciting. The others were only seen occasionally or for some, they were only seen once.

These figures correlate with records held by the Police.

However, we recognise that this is still an issue for residents in the area and do everything we can to support residents, by raising issues in the Streetreach Centre. We assertively outreach to particular clients who are highlighted to see whether we can offer any further support to them, which will facilitate them to exit prostitution and move on to a more positive lifestyle.

As manager of the Streetreach Project and board member for the UKNSWP (UK Network for Sex Work Projects), I have attended a number of meetings at the Home Office and supported the development of the National Crime Stoppers Ugly Mugs STOP Campaign. This is a national scheme to highlight that violence towards those involved in prostitution is a crime.

It also allows opportunity to detect perpetrators who are transient. Fortunately for Doncaster all violent crimes against those involved in prostitution have always been detected. However, unfortunately this is not the case on a national level, there are many undetected cases of violence, rapes and murders.

Once again it is pleasing to note that no one under the age of 16 has been identified in the area used for soliciting for the purpose of prostitution.

However, we do acknowledge there is a huge shift in trend for young people's involvement in sexual exploitation and internal trafficking.

There is always a great deal of coverage regarding international trafficking of young people but rarely anything about young people born in this country going

with older men known to them to various parts of the country and then being sexually exploited. This is always so much more difficult to detect and prosecute. The majority of these young people refuse to give statements and because the young people are kept in houses and often abused between men known to each other or within family, it is extremely covert.

On a more positive note, a lot of emphasis on the project has been on supporting a number of clients through pregnancy. Through support from Streetreach, they have been able to keep their children with them with little or no Social Service involvement and as a result have settled well into parenthood.

The focus of the project continues to be on supporting those involved in prostitution to move on to a more positive lifestyle. This is evidenced in the numbers accessing the services available in the Streetreach centre.

We continue to work in partnership with other organisations, in particularly the Police, and constantly review our work and changes in trends so that we strive to deliver a needs led service.

The Drug Treatment Programme is crucial and has huge added value to the Project, enabling us to offer a one-stop shop. This report will give you an insight into each aspect of the Project, highlighting good practice in order to break the cycle of prostitution and drug use.

However, this could not be achieved without the commitment, motivation, enthusiasm and hard work of the Streetreach team. The Trustees of the Project who continue to support us and believe wholeheartedly in the work that takes place.

I also want to say a big **Thank YOU** to our funders, who without them the Project would not exist!

Kind regards,

Trudy Harrington

Project Manager

STAFF MEMBERS

THE ORGANISATION AT 31 MARCH 2007:-

STAFF

TRUDY HANNINGTON

Project Manager

MARILYN HAUGHTON

Assistant Manager with responsibility of developing services for Under 18s

HILARY OWEN

Administration Officer

JILL COLLIER

Senior Drugs Worker

BOB CASE

Community Psychiatric Nurse

LORRAINE MAILLIE

Outreach Worker and Activity Worker

HEATHER GOODWIN

Outreach Worker and Activity Worker

DONNA ROBINSON

Project and Outreach Worker

CAROL CORDON

Outreach Worker and Activity Worker

TARA GARLAND

Administration Worker

ELAINE SPENCER

Personal Safety Worker

DR. P HURLEY

Sessional General Practitioner

STREETREACH TRUSTEES

The Trustees of the STREETREACH Project are as follows:-

Mrs S Knowles, Independent

Angela Scott, Doncaster East Primary Care Trust

Dee Hammerson, Doncaster Metropolitan Borough Council, Youth Service

Jenny Tasker, Independent

Graham Ashworth, Independent

Suzannah Cookson, Sexual Health Services

The objects of the Charity, as detailed in the Constitution, are:-

- (1) The preservation and protection of the sexual health of females and males involved in, or at risk of prostitution with the aim of identifying and encouraging alternatives to prostitution in the town of Doncaster and immediate neighbourhood.
- (2) The presentation and protection of sexual health of men who have sex with men in the Borough of Doncaster and immediate neighbourhoods with the aim of reducing Sexually Transmitted Infections and HIV/Aids.
- (3) The advancement of the education of the public in the issues surrounding the dangers of prostitution, drugs and other related issues.

STREETREACH TRUSTEES



From

SUE KNOWLES
CHAIR OF STREETREACH

Once again it gives me great pleasure to contribute to the Streetreach Annual Report as the Chair of the Streetreach Charity.

On behalf of all the trustees we want to thank and applaud the staff team of the Streetreach project for their continued hard work, motivation and enthusiasm in supporting women to exit prostitution and move on to a more positive lifestyle.

A huge emphasis this year has been proactive work around personal safety in order to attempt to prevent the regular and ongoing violence and sexual assault towards those most vulnerable.

Once again the Streetreach project was formally recognised for its excellent work. As part of the Youth Service OFSTED Inspection, the service received Level 4s across the board and was stated as "outstanding".

As a result all members of the team received the GEM Award (Going the Extra Mile), which I believe they have always done and will continue to do.

I would also like to formally thank the supporters of the Streetreach Project, both the funders and the many agencies and organisations who work in partnership with the project.

Partnership work is crucial and is what makes the Streetreach project the success it is.

Sue Knowles, Chair of Streetreach

STATEMENT OF PURPOSE

The Streetreach Project delivers a holistic approach to sexual health for young people and adults involved in, or at risk from prostitution and sexual exploitation. All individuals will be in control of their own affairs and destinies, we are there as enablers, working to promote self-determination and equality of opportunity. We aim to eliminate some of the oppression, injustice and educational disadvantages from which many of our clients suffer. We encourage and support women to a more positive lifestyle away from prostitution.

EQUAL OPPORTUNITIES STATEMENT

The Streetreach Project is opposed to all forms of discrimination, injustice and inequality. The Streetreach Project is committed to creating equal opportunity for everyone, regardless of H.I.V. status, gender, sexuality, race, culture, ability, age, class, economic, or any other disadvantages. The Streetreach Project will develop a service, which is sensitive to the needs of individuals and is based on mutual respect.

OPENING TIMES

STREETREACH is open as follows:-

Mondays	1.00pm-4.00pm	Drop-In
Mondays - evenings	6.00pm-9.00pm	GP Session
Tuesdays	11.00am-4.00pm	Drop-In
Wednesdays	11.00am-4.00pm	Drop-In
Thursdays	11.00am-4.00pm	Drop-In
Fridays	11.00am-3.00pm	Drop-In

OUTREACH SESSIONS

Mondays	8.00 pm - 10.00 pm
Wednesdays	8.00 pm - 10.00 pm
Thursdays	8.00 pm - 10.00 pm

**STREETREACH office hours are
9.00 am - 5.00 pm Monday to Friday**

OUTREACH

Outreach continues to be the initial point of contact. A minimum of 2 sessions per week is delivered and the women are actively encouraged to access the Streetreach Centre.

We have also varied evenings and times to attempt to identify and contact as many individuals as possible.

We continue to share information with the Police with regard to "dodgy punters" and now have an agreed information sharing protocol.

If ever there has been a violent or sexual attack on a woman, the Police are extremely responsive. They attend the Streetreach Centre to interview the woman concerned and a worker is able to stay with the client throughout the whole process in order to offer as much support as possible.

As yet we do not have a dedicated Vice Team in Doncaster. As a result the area used for soliciting is not policed on a full time basis. The difficulty with this is that numbers of women seen soliciting increases as soon as there is no police activity.

On a positive note we have had few "dodgy punters" and when there has been these have been dealt with quickly and positively through joint working with the Police and the Personal Safety Worker funded through the Victims Fund. This post has been a great asset to the Project, enabling us to have a dedicated full-time worker who has developed preventative work to highlight the issues of safety and run workshops on safety issue.

We are also part of the National Ugly Mug Scheme, co-ordinated by "Crime Stoppers", which aims to stop violence against those involved in prostitution and keep individuals safe and support the women on an individual basis to report crimes against them.

Personal safety leaflets and personal attack alarms are also distributed in order to minimise risk as much as possible.

THE STREETREACH CENTRE

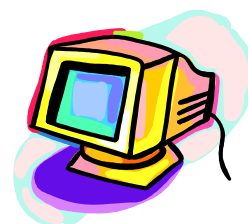
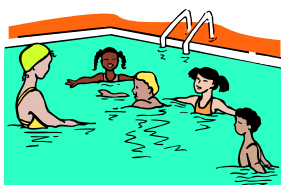
The Drop-in continues to be the 'hub' of the Project offering a safe haven as well as a one-stop shop offering a range of activities as well as liaison and referral to other agencies.

We hope that everything we offer will have a positive impact on a woman's lifestyle, from the practical interventions such as shower, washing and drying facilities, through to structured workshops addressing issues around parenting, sexual health, drug use and relapse preventions etc.

Activities such as baking and art/crafts are designed for fun as well as developing new skills. The aim of trips and residentials are to work on personal and social skills. A range of complimentary therapies is also available to enhance the drug treatment programme including personal counselling and support.

Other Centre based activities include

- ▶ A Social Inclusion Drug Treatment Programme
- ▶ Vaccination for Hepatitis A and B and screening for Hepatitis C
- ▶ Access to IT and the internet
- ▶ Psychosexual Therapy
- ▶ Access to Education/Training and Employment
- ▶ Access to gym/swimming



Awards

All the women accessing the project are encouraged to have their own portfolio.

Any "work" undertaken at Streetreach is recorded and evaluated, be it baking through to structured workshops or representing the project at service user involvement conferences.

These portfolios are then submitted for the National Youth Achievement Awards. This year two young women achieved their bronze awards.

In-house certificates are also awarded in recognition of positive changes and involvement in the centre.

Personal Safety

This year has seen the launch of the National Crime Stoppers Ugly Mug Scheme and to support this we have had a number of workshops focussing on Personal Safety. This has been co-ordinated by the Personal Safety Worker and involved liaison work with the Police.

The Streetreach Project has excellent partnership arrangements with Health and Social Services.

We have a monthly sexual health session, offering screening and treatment for a range of sexually transmitted infections and also a contraception service.

We work closely with Social Service around child protection issues.

FAST TRACK SOCIAL INCLUSION DRUG TREATMENT PROGRAMME FOR WOMEN INVOLVED IN PROSTITUTION

As the Streetreach project developed, it was soon identified that there were a significant number of women who were vulnerable drug users living or impacting in the area. By engaging with these women and offering them access to treatment we hope to reduce the numbers of women funding a drug habit by involvement in prostitution.

It must be said however, that accessing treatment would not necessarily mean that all these women would become or remain drug free, but they would as a result of our intervention, be able to minimise the amount of harm they were doing to themselves, as well as gaining some control over their substance misuse. This in turn, would lead to a reduction in the impact that drugs have in their lives. Obviously the long-term aims were to support women through treatment and help them in maintaining a drug free life style and exit prostitution.

By accessing services, even if not ready to undertake detox, women would begin to take control of their drug problems, resulting in an improvement in the quality of their lives. This will hopefully have an impact on associated antisocial behaviors such as acquisitive crime and prostitution within the area.

Women who have presented for treatment over this last year have been increasingly more chaotic, with greater dependency problems. This is evidenced by an increase in the amounts of drugs that they have been using, as well as in their methods of use ie an increase in the number of women injecting heroin direct into their femoral veins. We have seen a rise in the number of women looking towards continuing treatment on either methadone or Subutex prescriptions, therefore treatments have to be developed taking in to account individual needs.

In some instances it is necessary to identify long term supporting interventions, whereas in others, short-term programmes may or may not be appropriate. We are now looking at treatment with extended periods of health and social support, particularly for clients who due to their chaotic lifestyle would normally be excluded.

By working closely with these women and by establishing links with other agencies they have access to education, training and employment opportunities, which can provide an effective exit strategy to their chaotic life style.

We continue to be pro active in our approach to engaging women in treatment by conducting outreach a minimum 2 nights per week. We encourage women not only to look at safer sexual practices and harm reduction but also actively encourage them to think about their drug use and to come to the project and talk about what treatment options are open to them.

We provide a supportive service to all women who are involved in prostitution, not only those that are currently in treatment. Some women are not ready to address their drug use at this time but need our help in order to look at other things that impact on their lives. ie. housing, benefits, general health etc. We also offer help in accessing education, training and employment.

Within the last year, 44 women have accessed our treatment programme. Of these, 25 women are still currently in treatment. We continue to encourage these women to maintain family contact, and in some cases actively encourage them to regain contact as often through the very nature of the work they have become estranged from families.

Six of our women have had babies born over the last year; all but one baby has stayed with mum. This has been achieved by our support and by working closely with children and family services in order to keep the family together, as per the Governments" Hidden Harm" agenda.

Eight women are currently in employment, four full-time and four part-time. Five have successfully accessed day care at New Beginnings with five families taking part in parenting workshops. Two clients have accessed education through Northern College and one through Doncaster College full time. Two women have taken part in the "Speak Out Group" and three clients along with Jill Collier, Senior Drugs Worker, took part in a sponsored abseil from Doncaster Royal infirmary in order to raise funds for the Aurora Centre. We have organised two-Day trips to the coast for families as well as going on a ghost walk in York last Halloween.

A lot of the work we do cannot be easily measured. How do you gauge the impact you have had on someone's life? In some instances when someone stops all drug use and starts to rebuild their lives its easy, but for many this may not be the reality. It may be what they aim for but lapse and relapse are an integral part of drug treatment and often-small steps are all you can hope for. But, by constantly looking to re engage with a client once they lapse, we can continue to make a difference with the long term aim of supporting each client to exit prostitution and drug use and move on to a more positive lifestyle.

YOUNG PEOPLES PROJECT UNDER 19S

The aim of the Under 19's work is to identify children and young people that are being sexually exploited and to develop individual packages of support that meet the needs of each young person.

Most of the young people are engaging in behaviour that increases their vulnerability and which places them in situations that are detrimental to their health and safety. They have frequent absences from school, are often reported as missing from home and associating with others who are equally as vulnerable. Many have a very disruptive family background and some have experience of the care system and lead chaotic lives. It is this lifestyle that brings them into contact with adults who seek to sexually exploit them. They are often part of a network of young people who are being manipulated and coerced into taking other young people to the homes of perpetrators where there is often several males living at the same occupancy.

Whilst the young people will engage with Streetreach, they often do not accept that they are vulnerable, at risk, or that there is a problem with their lifestyle. They believe that their 'needs' are being met through their association with these perpetrators and we have to accept that change is a slow process. Our priority therefore is to build an early relationship or trust with the young people, which enable us to maintain regular contact. During this time we can offer and deliver a wide range of activities and support that is flexible enough to cater for each young person's individual circumstances.

These include:-

LEISURE ACTIVITIES

Bowling, Swimming, Arts/crafts, Seaside trip, Xscape (aerial assault course) etc.

RESIDENTIAL

Cultural visit to London to include a trip to Madam Tussauds and sightseeing. This was for 2 young people we had worked with for 18 months and who with support through our Youth Service Connexions PA had enrolled on a full time college course. Despite difficult personal circumstances they were able to

maintain their placements at college and contact with Streetreach was minimal. The majority of the young people we work with require intensive support and a rapid response, which places, huge demands on staff time. The young people, who have worked hard to make positive changes, do not believe that they 'deserve' ongoing support and are reluctant to ask for it even though their needs are equally as important, yet different, to other more chaotic young people. We believe it is important therefore to acknowledge and 'reward' positive steps and to track and maintain contact with young people to ensure they do not 'slip through the net'.

Both of these young people had completed their formal education through the DLP Programme.

ADVOCACY/ACCOMPANIED VISITS

These include:

Sexual Health Clinics

College

Prison Visits

Housing

Appointments with other agencies held at Streetreach

DROP-IN

The young people can access the Under 19s worker at the Streetreach Project. They are able to access a wide range of support such as:-

Counselling

1-2-1

Personal Development

Issue based sessions

Arts and Crafts

Informal time-out

Shower/Washing facilities

Appointments with other key workers e.g. Connexions, YOS

Information/Advice/Guidance

If the Under 19s worker is unavailable the young person can ask for support from the general Streetreach team.

DISTANCE LEARNING PACKAGE (DLP)

This continues to be a unique education initiative for sexually exploited young people who are out of mainstream education and is provided by Beckett Road

Pupil Referral Unit. The young people are given a 5 day timetable covering the curriculum and are supported through a teacher and teaching assistant. The DLP is also supported through a dedicated Education Welfare Officer who has specific responsibility for sexually exploited young people. The Education Welfare Officer has responsibility for the assessment of suitability of a young person's place on DLP, provides advice and guidance to agencies and works intensively with young people and their families to ensure they receive adequate education.

Streetwork are part of the DLP timetable and our sessions cover a wide range of issues such as *Healthy Eating, Offending Behaviour, Drugs/Alcohol, Sexual Exploitation, Self Esteem, Arts/Crafts, Sexual health.*

All work undertaken by the young people is collated into a portfolio as a record of achievement and is submitted for an award such as Duke of Edinburgh, Youth Achievement Award. This is encouraged and supported through the Youth Service Award Team.

We have been fortunate to have support with the DLP from the Youth Service Connexions Teenage Pregnancy. This has enabled a greater focus on education, employment and training for the young people, who will have built up a good relationship with the Personal Assistant and can draw on this relationship when they are ready to make positive changes and explore options for their future.

SCHOOL PREVENTION PROGRAMME

All children and young people could potentially be at risk of sexual exploitation and schools are able to play a vital role in reducing this risk. The Streetwork School Prevention Programme is central to the Government Every Child Matters programme and works towards achieving the five national outcomes, in particular Staying Safe and Being Healthy. The sessions are part of the Doncaster Healthy Schools Programme and are delivered within the Healthy Schools guidelines which includes:- Planning Checklist, Input Observation, Teacher Evaluation, External Contribution Evaluation and Pupil Evaluation.

The sessions are part of the wider PSHE curriculum, last for 50 minutes and delivered to mixed gender groups. The young people participate in group activities and questions. This includes all issues relating to prostitution and the risks and consequences associated with that lifestyle.

Schools that have taken part this year include:-

Don Valley School and Performing Arts College, Edlington School (A Business and Enterprise College), The McAuley Catholic High School (A Specialist College for Performing Arts), Northcliffe School and Danum School Technology College.

NON SCHOOL BASED SITES

Doncaster Foyer
Students at Doncaster College Hair and Beauty
Youth Centres
Teenage Mums
Local Community Groups

MULTI-AGENCY FORUM

The Multi-Agency Forum consists of a range of professional people who work with young people and are working together to safeguard and promote the welfare of young people at risk or involved in sexual exploitation.

The Forum meets monthly to discuss individual cases and sets action plans based on the needs of each young person and often involves strategy meetings, case conferences and core groups. Parents and carers are part of the process and can play an important role in keeping the young person safe and can access support for themselves from Forum members on request.

The Forum also collates information on perpetrators in order to build a comprehensive picture of the nature and extent of the problem of sexual exploitation across the Borough. Strategies are put in place for a course of action against identifiers/exploiters. This often includes using the Child Abduction Act, which can act as a deterrent to adult males who are harbouring young people.

Streetreach can work with the young people on all issues affecting their lives and this often involves working alongside other agencies when appropriate. Sharing information and maintaining contact with the young people is crucial in keeping them safe.

Membership (open to all agencies working with sexually exploited young people)
South Yorkshire Police - Child Protection and Missing from Home
Education - Pupil Referral Unit and Education Welfare
Health - Specialists
Social Services
Streetreach
Jigsaw - Young Peoples Project
The Bridge - Youth Service Advice, Information and Guidance Project
YOS (Youth Offending Service)
Barnados Leaving Care
Connexions - Youth Service
Better Deal - Young Peoples Drug Service

NATIONAL WORKING GROUP FOR SEXUALLY EXPLOITED CHILDREN AND YOUNG PEOPLE (NWG)

The aim of the NWG is to develop an appropriate support network for services working with children and young people at risk of or experiencing sexual exploitation and trafficking. It is a constituted voluntary organisation with a membership of over 150 voluntary and statutory staff.

Streetreach is a member of the NWG management group and attends regular meetings. The Management Group contributes to all consultation exercises, in particular, the current re-writing of the Safeguarding Children involved in Prostitution Guidance, the UK Human Trafficking Victim Group and Research and Education Group. A website is being developed to include a Youth Forum.

CONTRIBUTIONS FROM CLIENTS



Great place, helping me to do my detox, great support. They built my confidence up and made me believe in myself.

I still use Streetreach even though I am coming up to being drug free for 2 years. They give me loads of support and help me keep on the right track. They also managed to get me a bursary for my cooking equipment. I have just finished my Level 1 and will be starting Level 2 in September so I am very thankful to Streetreach and all of the staff so thank you.

The workers at Streetreach have given me a lot of support over years. This last year they have given me a great amount of support. If they hadn't been there I don't think I'd be here today. They went looking for me when I hadn't been in for a while and found me at a caravan. They gave me a place to get clean. I will never forget that they were there when I needed them. They nagged me to get back into activities and to stay away from drugs. This changed my life around and things couldn't be better.

I am very thankful to Streetreach for all the support they have given me especially with my college course. Without the help of a bursary funding to purchase clothes and equipment I would not have been able to do the course and fulfil my life ambition.



THE FUTURE

It gives me great pleasure to confirm that in this last 12 months we were successful in securing a grant from Supporting People to employ a full-time Tenancy Support Worker.

Housing has always been a huge problem and often can be a real hindrance in the morning on process.

The new worker is due to start next month - April 2007.

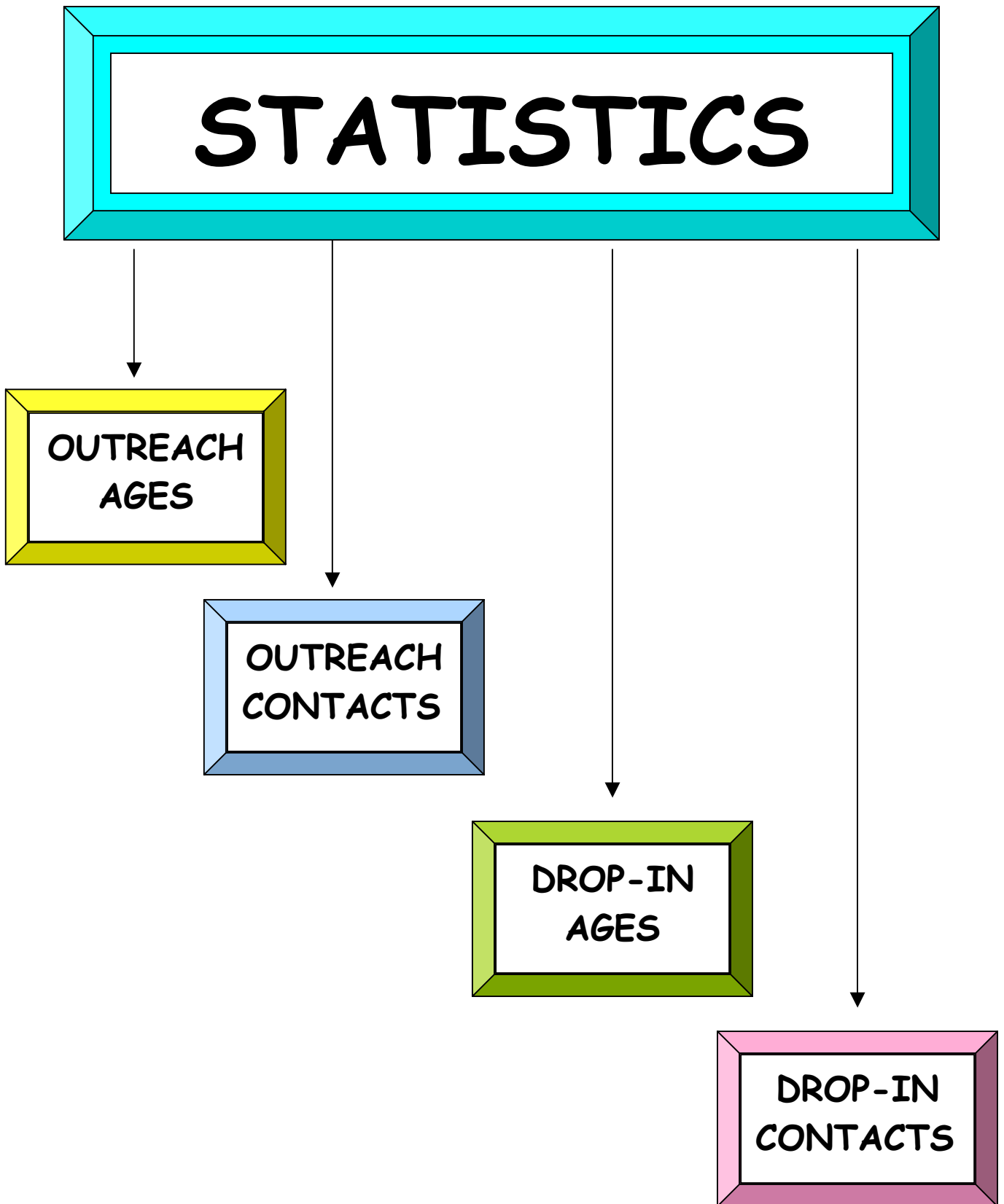
A big priority for the project for 2007/08 will be to research other funding streams as it becomes more and more difficult to access. A lot of funding is short term and often cannot be reapplied for once ended. This can be very frustrating when a project is developed and then has to end due to funding restrictions.

The lottery will be this year's main application in order to sustain and develop the activities in the project.

We will also continue to liaise and participate on a national level in order to monitor trends, share good practice and keep the issues of prostitution high on the agenda.

We will continue to monitor the services we provide in order to offer the very best possible service to our client group.

STATISTICS
APRIL 2006 – MARCH 2007



STREETREACH

STATISTICS

1 APRIL 2006 - 31 MARCH

OUTREACH - AGES

WOMEN/GIRLS

- 6** between 13-18 years
- 5** between 19-21 years
- 25** between 22-25 years
- 55** between 26-35 years
- 10** over 36+

STREETREACH

STATISTICS

1 APRIL 2006 - 31 MARCH

OUTREACH CONTACTS

101 INDIVIDUALS

OUTREACH CONTACTS (NEW)

20 INDIVIDUALS

STREETREACH

STATISTICS

1 APRIL 2006 - 31 MARCH

DROP-IN - AGES

WOMEN/GIRLS

3 between 13-18 years (**0 NEW**) (**2 NOT WORKING**)
10 between 19-21 years (**1 NEW**) (**3 NOT WORKING**)
30 between 22-25 years (**0 NEW**) (**16 NOT WORKING**)
62 between 26-35 years (**8 NEW**) (**29 NOT WORKING**)
16 over 36+ (**0 NEW**) (**11 NOT WORKING**)

STREETREACH

STATISTICS

1 APRIL 2006 - 31 MARCH

DROP-IN CONTACTS **111** INDIVIDUALS

DROP-IN CONTACTS (NEW) **9** INDIVIDUALS

61 NO LONGER INVOLVED IN PROSTITUTION

DONCASTER METROPOLITAN BOROUGH COUNCIL
Neighbourhoods, Communities & Childrens Services

STREETREACH PROJECT
FINANCIAL ACCOUNTS 1ST APRIL 2006 - 31ST MARCH 2007

EXPENDITURE	£	INCOME	£
EMPLOYEE COSTS			
Salaries	19,094.12	Home Office	29,963.00
National Insurance	1,280.05	Doncaster MBC Brough Fwd	25,391.30
Superannuation	2,981.88	Doncaster MBC Carry Fwd	-17,526.40
		Doncaster MBC NCCS	2,680.00
		Doncaster MBC Contribution to Underspend	-10,337.99
OTHER EMPLOYEE COSTS			
Travel & Subsistence	139.00		
Insurance Employers Liab	201.04		
Staff Recruitment	9.73		
PREMISES			
Repairs & Maintenance	376.81		
Gas	313.75		
Electricity	293.29		
Window Cleaning	84.71		
Water Charges	39.65		
Building Cleaning	1,236.63		
Security Alarms	19.72		
Rent & Rates	2,889.11		
Collection of Refuse	58.00		
Telephones	548.75		
OTHER RUNNING COSTS			
Furniture & Fittings	31.88		
Equipment (Incl Computers)	378.96		
Printing & Stationery	62.80		
Conference Fees	50.00		
General Insurance	68.48		
Activities	11.55		
	<u>30,169.91</u>		<u>30,169.91</u>

Stephen Boldry
 Senior Finance Officer
 Services Financial Management
 Neighbourhoods, Communities & Childrens Services
 Doncaster Metropolitan Borough Council

Date : 8th June 2007

DONCASTER METROPOLITAN BOROUGH COUNCIL
Neighbourhoods, Communities & Childrens Services

STREETREACH NEIGHBOURHOOD SUPPORT FUND
FINANCIAL ACCOUNTS 1ST APRIL 2006 - 31ST MARCH 2007

EXPENDITURE	£	INCOME	£
<i>EMPLOYEE COSTS</i>			
Salaries	34,180.93	Connexions	35,004.00
National Insurance	2,929.04	Doncaster PCT	6,000.00
Superannuation	1,061.27	Other Income	2,125.18
<i>OTHER EMPLOYEE COSTS</i>			
Car Allowances	281.06	Doncaster MBC NCCS	1,460.00
Travel & Subsistence	893.88	Doncaster MBC Contribution to Underspend	-2,706.12
Staff Recruitment	80.18		
Insurance Employers Liab	225.97		
<i>OTHER COSTS</i>			
Equipment	502.62		
Provisions	73.05		
Printing & Stationery	914.97		
Telephones	4.00		
Activities	736.09		
	<u>41,883.06</u>		<u>41,883.06</u>

Stephen Boldry
Senior Finance Officer
Services Financial Management
Neighbourhoods, Communities & Childrens Services
Doncaster Metropolitan Borough Council

Date : 8th June 2007

DONCASTER METROPOLITAN BOROUGH COUNCIL
Neighbourhoods, Communities & Childrens Services

STREETREACH DRUG SUPPORT WORKER
FINANCIAL ACCOUNTS 1ST APRIL 2006 - 31ST MARCH 2007

EXPENDITURE	£	INCOME	£
EMPLOYEE COSTS			
Salaries	27,312.50	Doncaster PCT	43,472.00
National Insurance	2,101.46	New Deal for Communities	792.82
Superannuation	4,281.40	Doncaster MBC Contribution to Underspend	-8,231.51
OTHER EMPLOYEE COSTS			
Management Costs	95.00		
Travel & Subsistence	232.64		
Staff Travel	145.00		
Insurance Employers Liab	200.74		
Staff Recruitment	5.36		
OTHER COSTS			
General Equipment	627.64		
Printing & Stationery	43.87		
Postages	3.47		
Provisions	119.67		
Transport	61.70		
Activities	802.86		
	<u>36,033.31</u>		<u>36,033.31</u>

Stephen Boldry
Senior Finance Officer
Services Financial Management
Neighbourhoods, Communities & Childrens Services
Doncaster Metropolitan Borough Council

Date : 8th June 2007

DONCASTER METROPOLITAN BOROUGH COUNCIL
Neighbourhoods, Communities & Childrens Services

STREETREACH SOCIAL INCLUSION PROGRAMME
FINANCIAL ACCOUNTS 1ST APRIL 2006 - 31ST MARCH 2007

EXPENDITURE	£	INCOME	£
EMPLOYEE COSTS			
Salaries	6,000.00	Doncaster PCT	7,500.00
National Insurance	65.76	Doncaster MBC Contribution	-447.32
Superannuation	942.00	to Underspend	
Insurance Employers Liab	44.92		
	<u>7,052.68</u>		<u>7,052.68</u>

Stephen Boldry
Senior Finance Officer
Services Financial Management
Neighbourhoods, Communities & Childrens Services
Doncaster Metropolitan Borough Council

Date : 8th June 2007

DONCASTER METROPOLITAN BOROUGH COUNCIL
Neighbourhoods, Communities & Childrens Services

STREETREACH PROJECT
FINANCIAL ACCOUNTS 1ST APRIL 2006 - 31ST MARCH 2007

EXPENDITURE	£	INCOME	£
<i>EMPLOYEE COSTS</i>			
Salaries	76,886.42	Doncaster PCT	65,558.00
National Insurance	5,156.55	Comic Relief	7,500.00
Superannuation	9,547.38	Miscellaneous Income	710.63
		Doncaster MBC NCCS	28,810.00
		Doncaster MBC Contribution to Overspend	20,362.94
<i>OTHER EMPLOYEE COSTS</i>			
Tuition Fees	50.00		
Car Allowances	3,234.64		
Travel & Subsistence	904.64		
Insurance Employers Liab	819.74		
Misc Employee Expenses	142.65		
<i>PREMISES</i>			
Repairs & Maintenance	770.96		
Gas	1,064.00		
Electricity	994.63		
Window Cleaning	287.29		
Water Charges	134.48		
Building Cleaning	4,193.73		
Security Alarms	66.89		
Rent & Rates	7,629.07		
Collection of Refuse	196.68		
Telephones	2,001.84		
Rental Equipment	796.14		
<i>OTHER RUNNING COSTS</i>			
Furniture & Fittings	108.12		
Equipment (Incl Computers)	1,408.73		
Newspapers & Periodicals	9.35		
Printing & Stationery	1,060.19		
Photocopying	37.45		
Provisions	659.96		
Postages	64.39		
Conference Fees	560.00		
General Insurance	232.24		
Activities	2,297.96		
Other Miscellaneous Expenses	1,578.45		
General Subscriptions	47.00		
	<u>122,941.57</u>		<u>122,941.57</u>

Stephen Boldry
Senior Finance Officer